

Mission Hill Middle School

Master Plan Scenario

In relation to

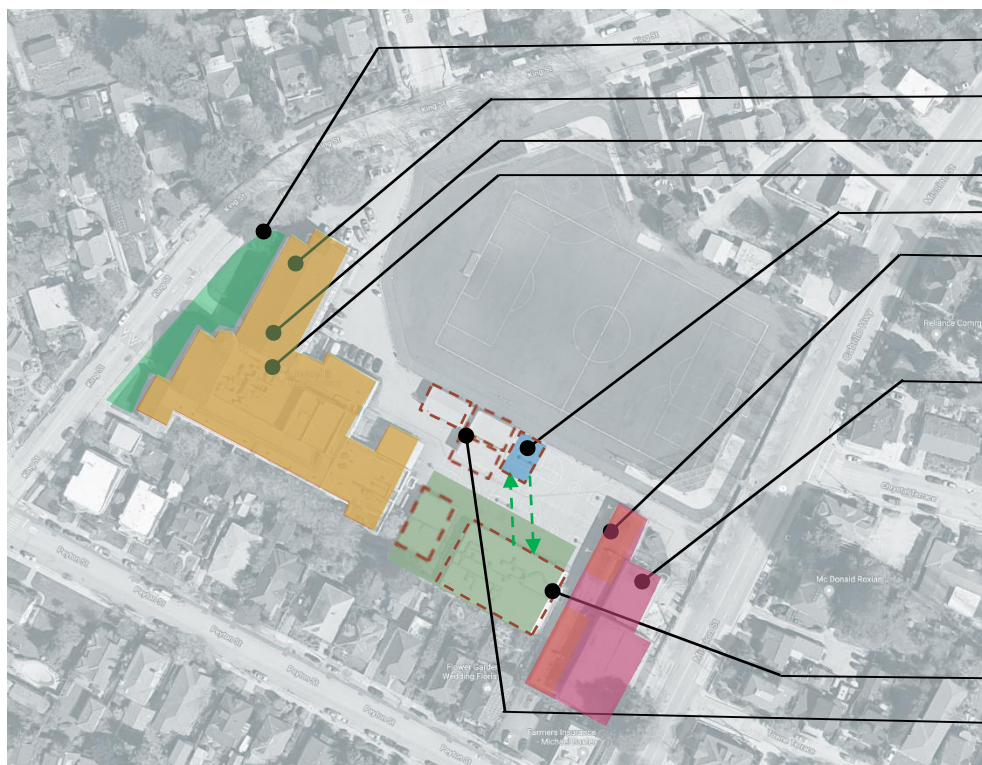
Front Landscape Bid Analysis

SANTA CRUZ CITY SCHOOLS | PLANNING REVIEW COMMITTEE – 04 MAY 2018

BARTOS
ARCHITECTURE

COLLABORATION
ADVOCACY
RESEARCH
EDUCATION

Master Plan - Draft



Front Shelter Access	\$1,100,000
Roofing Phase 1: Main Building	\$1,600,000
Mod Phase 1: Partitions	\$245,000
Mod Phase 2 (partial mod)	\$1,325,000
Temporary Portable	\$75,000
Gym Phase 1: Locker Rooms	\$100,000
Roofing Phase 2: Gym	\$875,000
New CR Building	\$12,000,000
Remove Existing Portables	\$100,000
Total	\$17,420,000

Summary

- New Roofing
- Front Entry Improvements (hardscape and landscape)
- New Classroom Building (Potential 2-story with restrooms)
- Install Temporary Portable?
- Remove Portables
- Modernize Main Building (full mod is funding dependent)
- Modernize and expand Gymnasium (funding dependent)

Gymnasium Phase 2	Funding Dependent
Site Improvements	Funding Dependent

Front Landscape Project - Cost Analysis

Option Analysis

Base Bid:	\$454,000
<ul style="list-style-type: none"> o Concrete and brick pavers o Sloped walkway o Decorative handrails o Secondary entry concrete steps o Raised planters o Metal benches o Ground cover and palm trees 	
Alternate 1 – Student Shelter: “Trellis”	\$150,000
<ul style="list-style-type: none"> o Metal Panel Roof o Wood Trellis Construction 	
Alternate 2 – Student Shelter: “Depot”	\$200,000
<ul style="list-style-type: none"> o Gable clay tile roof o Cement plaster finish 	
Alternate 3 – Monument Sign: Steel Structure	\$100,000
<ul style="list-style-type: none"> o Gable clay tile roof o Steel and wood structure o Electronic Sign 	
Alternate 4 – Monument Sign: CMU Structure	\$111,000
<ul style="list-style-type: none"> o Gable clay tile roof o CMU (Concrete block) and wood structure o Electronic Sign 	

	Running total	Difference
Option 1: Base Bid Only	\$454,000	<i>base bid only - \$0</i>
Option 2: Base Bid + Alternate 1 + Alternate 3 454,000 + 150,000 + 100,000	\$704,000	\$250,000
Option 3: Base Bid + Alternate 1 + Alternate 4 454,000 + 150,000 + 111,000	\$715,000	\$261,000
Option 4: Base Bid + Alternate 2 + Alternate 3 454,000 + 200,000 + 100,000	\$754,000	\$300,000
Option 5: Base Bid + Alternate 2 + Alternate 4 454,000 + 200,000 + 111,000	\$765,000	\$311,000

Front Landscape Project - Recommendation



Recommended “Depot” Option

\$754,000

Base Bid

- Concrete and brick pavers
- Sloped walkway
- Decorative handrails
- Secondary entry concrete steps
- Raised planters
- Metal benches
- Ground cover and palm trees

Alternate 2 – Student Shelter: “Depot”

- Gable clay tile roof
- Cement plaster finish

Alternate 3 – Monument Sign: Steel

- Gable clay tile roof
- Steel and wood structure
- Electronic Sign

Front Landscape Project - Option 2



Trellis Shelter - Option 2

\$704,000

Base Bid

- Concrete and brick pavers
- Sloped walkway
- Decorative handrails
- Secondary entry concrete steps
- Raised planters
- Metal benches
- Ground cover and palm trees

Alternate 1 – Student Shelter: “Trellis”

- Metal Panel Roof (Shed Roof)
- Wood Trellis Construction

Alternate 3 – Monument Sign: Steel

- Gable clay tile roof
- Steel and wood structure
- Electronic Sign

END

Front Landscape Project - Bid Analysis & Recommendation

Project Bid Analysis

Measure A | Mission Hill Middle School Front Landscaping

Date 9-Apr-18

District Project No. 032-002

	Base	Alternate 1	Alternate 2	Alternate 3	Alternate 4	Total	Remarks
Consolidated Summary							
CRW Construction	454,000	150,000	200,000	100,000	111,000	N/A	Prequalified
Bothman Construction	625,000	200,000	300,000	200,000	220,000	N/A	Prequalified
Bartos Estimate	504,000	100,000	250,000	96,000	96,000	N/A	
High Proposal	625,000	200,000	300,000	200,000	220,000	N/A	
Low Proposal	454,000	150,000	200,000	100,000	111,000	N/A	
Range	171,000	50,000	100,000	100,000	109,000	N/A	
Average	527,667	150,000	250,000	132,000	142,333	N/A	
Low Proposal	454,000		200,000	100,000		754,000	Recommended
Variance from High	(171,000)		(100,000)	(100,000)			
Variance from Estimate	(50,000)		(50,000)	4,000			(xxx) represents negative

Recommendation

Proceed with agreement with CRW Construction for a total price of \$754,000

Procurement Rationale

1. Thirty (30) potential bidders were contacted for formal bidding.
2. Project was advertised in newspaper per Public Contract Code Requirements.
3. Project scope is compliant with Measure A language, and Master Plan.
4. Project scope is high priority as determined by Site Leadership and Staff.